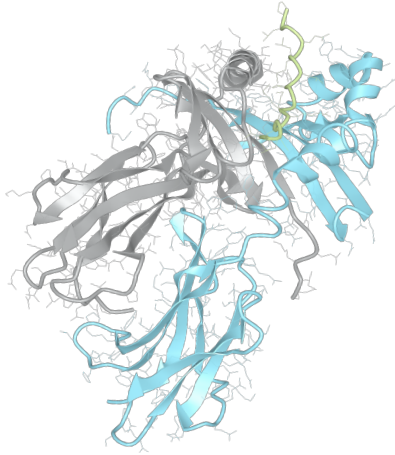


Product datasheet



sHLA- DRB1*01:03 DRA*01:01

DRB1*0103, DRB10103, DRB1*01, DRB01, DR103
DRA*0101, DRA0101, DRA*01, DRA01

Serological Name	DR103
Peptide Load	Endogenous
Modification	Unmodified
Conjugation	Unconjugated
SKU	DRB10103

Product Description

Allele Name	<p>DRA*01:01</p> <p>DRB1*01:03</p>
HLA Class	HLA Class II
HLA Gene Locus	HLA-DR
Alternative Allele Name A Chain	DRA*0101, DRA0101, DRA*01, DRA01
Alternative Allele Name B Chain	DRB1*0103, DRB10103, DRB1*01, DRB01, DR103
Description	Recombinant, truncated Class II soluble Human Leukocyte Antigen (sHLA), naturally folded and glycosylated, loaded with endogenous peptides.
Serological Name	DR103
Serological Split	DR1
Allele Frequency [World Population]	
A chain	-
B chain	0.6%

Associated products

[DRB10103bio](#)
[DRB10103pe](#)

Product Specification

Product name	HLA-DRB1*01:03
HLA Species	Human
Host Cell Line Species	Mouse
Clone Designation	F9
Tail Specification	ZP
Peptide Load	Endogenous
Modification	Unmodified
Conjugation	Unconjugated
Complexity	Monomer
Protein Format	Recombinant, truncated, zipper-stabilized, soluble, non-modified, non-labeled, endogenously loaded
Storage Temperature	4°C (This product should be stored undiluted)
Form	Liquid
Concentration	1000.0 µg/ml
Formulation	PBS/0.02% Sodium Azide
pH	7.4
Purification Method	Affinity Chromatography
Grade	Research Use Only [RUO]
Authentication Verification	Sequence Based Typing

Protein Sequences

Alpha Chain Sequence	<p> IKEEHVIIQA EFYLNPDQSG EFMDFDGDGE IFHVDMAPKE TVWRLEEFGR FASFEAQGAL ANIAVDKANL EIMTKRSNYT PITNVPPEVT VLTNSPVELR EPNVLICFID KFTPPVVNVV WLRNGKPVTT GVSETVFLPR EDHLFRKFHY LPFLPSTEDV YDCRVEHWGL DEPLLKHWEF DAPSPLPETT EVDGGGGGAQ LEKELQALEK ENAQLEWELQ ALEKELAQ </p>
-----------------------------	--

Beta Chain Sequence	<p> GDTRPRFLWQ LKFECHFFNG TERVLLERC IYNQEEVRF DSDVGEYRAV TELGRPDAEY WNSQKDILED ERAAVDTYCR HNYGVGESFT VQRRVEPKVT VYPSKTQPLQ HHNLLVCSVS GFYPGSIEVR WFRNGQEEKA GVVSTGLIQN GDWTFQTLVM LETVPRSGEV YTCQVEHPSV TSPLTVEWRA RSESAQSKVD GGGGGAQLKK KLQALKKKNA QLKWKLQALK KKLAQ </p>
----------------------------	--

Related Products

[DRB10101](#)
[DRB10102](#)
[DRB11101](#)
[DRB11501](#)

Applications

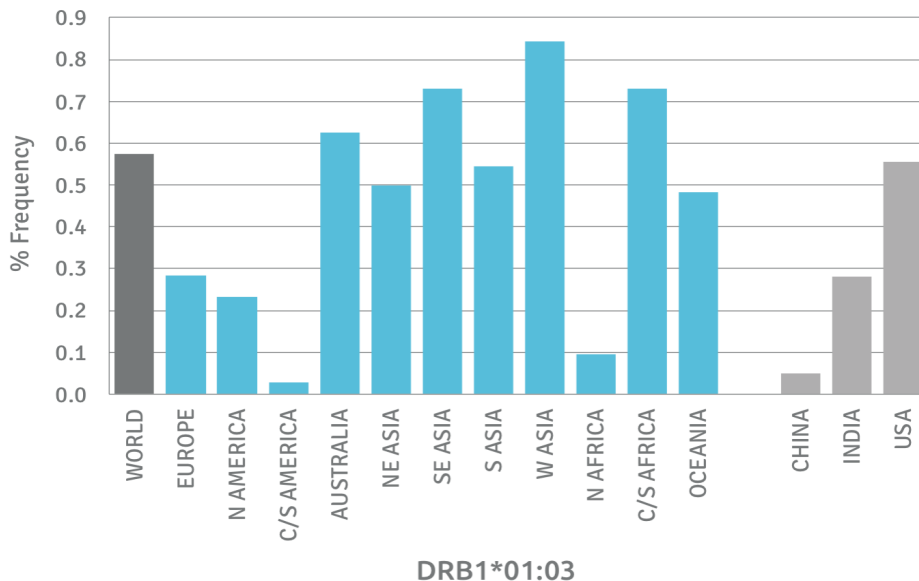
HLA Sandwich ELISAs
 HLA Direct ELISAs
 HLA-Sera Antibody Assays
 HLA Controls in ELISA Assays
 HLA Assay Standards
 HLA Blocking Assays
 HLA Neutralizing Assays
 HLA Competition Assays
 HLA Bead Assays
 HLA Immunization Procedures

Recommended Antibodies

L243

Allele Frequency

Worldwide Allele Frequency



Please note:

ALL PRODUCTS ARE FOR RESEARCH USE ONLY. NOT FOR COMMERCIAL USE IN DIAGNOSTIC PROCEDURES.
 For more information, please visit our Policies section on our website. For licensing inquiries, please contact

licensing@hlaprotein.com

HLA Protein
 PURE PROTEIN LLC

Eplet Assignments

DRB1*01:03

Eplet	Polymorphic Residues	Antibody Reactivity
4R	4R	Yes
13FE	13F14E	Yes
16H	16H	
25R	25R	Yes
26L	14E25R26L	
30C	30C	Yes
31I	31I32Y33N	
32Y	32Y	
32YN	32Y33N	
33N	33N	
37S	37S38V	
38V	38V	
40F	40F41D	
47Y	47Y	
47YR	47Y48R	
57D	57D60Y	
57DA	57D58A60Y	
58A	58A	
58AY	58A60Y	
60Y	60Y	
67I	67I	
70D	70D	Yes
70DA	70D73A	Yes
71E	70D71E73A	
73A	73A77T	Yes
74A	73A74A77T	
77T	77T	Yes
77TY	77T78Y	
78Y	78Y	
85V	85V	
86G	85V86G	
96EV	96E98K180V	Yes
98K	98K	
98KS	98K120S	
108P	105K108P	
112H	112H	
120S	120S	
140A	140A	
140AV	140A142V	
149Q	149Q	
180V	180V	
180VTP	180V181T183P	
181T	181T	
189R	187E189R	

